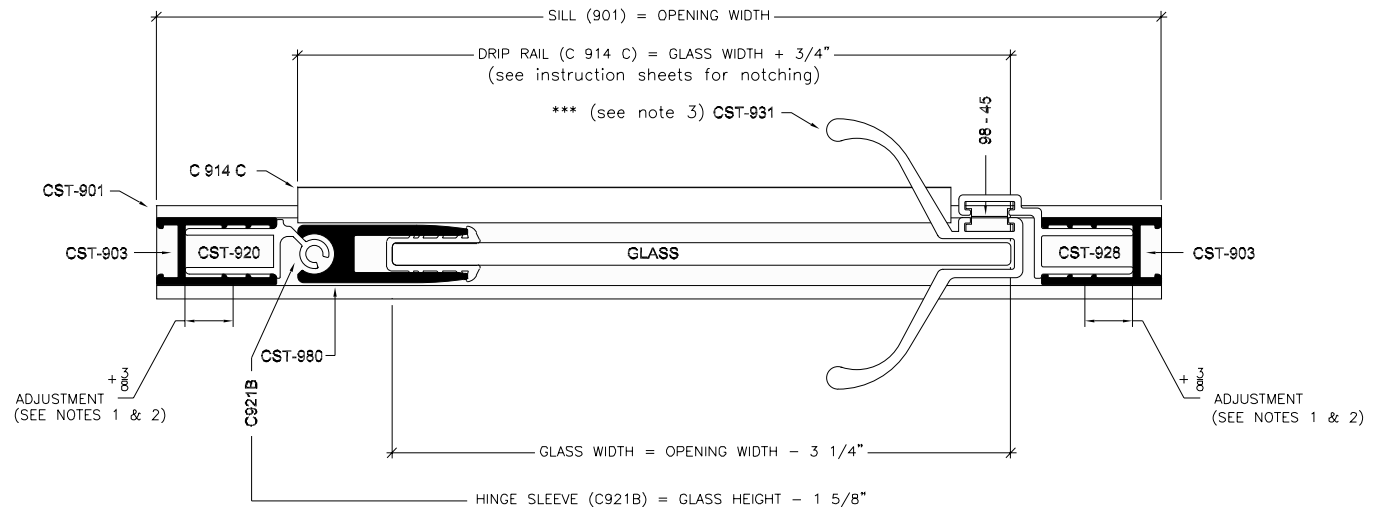


vertical cross section

*CST-980  
Used with brite and gold only*

**NOTES:**

1. FORMULAS ARE BASED ON A MINIMUM WIDTH OPENING. WHEN MEASURING OPENING WIDTHS, ALWAYS CHECK FOR OUT OF PLUMB WALL CONDITIONS.
2. STANDARD DOOR WIDTH ADJUSTMENT IS (+) 3/4 OF AN INCH. THE 3/4 INCH IS GAINED BY ADJUSTING STRIKE AND HINGE METALS (926 & 920) WITHIN THEIR RESPECTIVE WALL JAMBS (903) AS SHOWN IN HORIZONTAL CROSS VIEW.
- \*\*\* 3. WHEN USING C-PULL HANDLES (TA8-BTB) IN LIEU OF CST-931 HANDLES, PLEASE REFER TO GLASS PANEL PROCESSING SHEET FOR HOLE SIZE AND LOCATIONS.



horizontal cross section

Series	Unit Configuration
PARAGON	Frameless Door (w/stile 980)