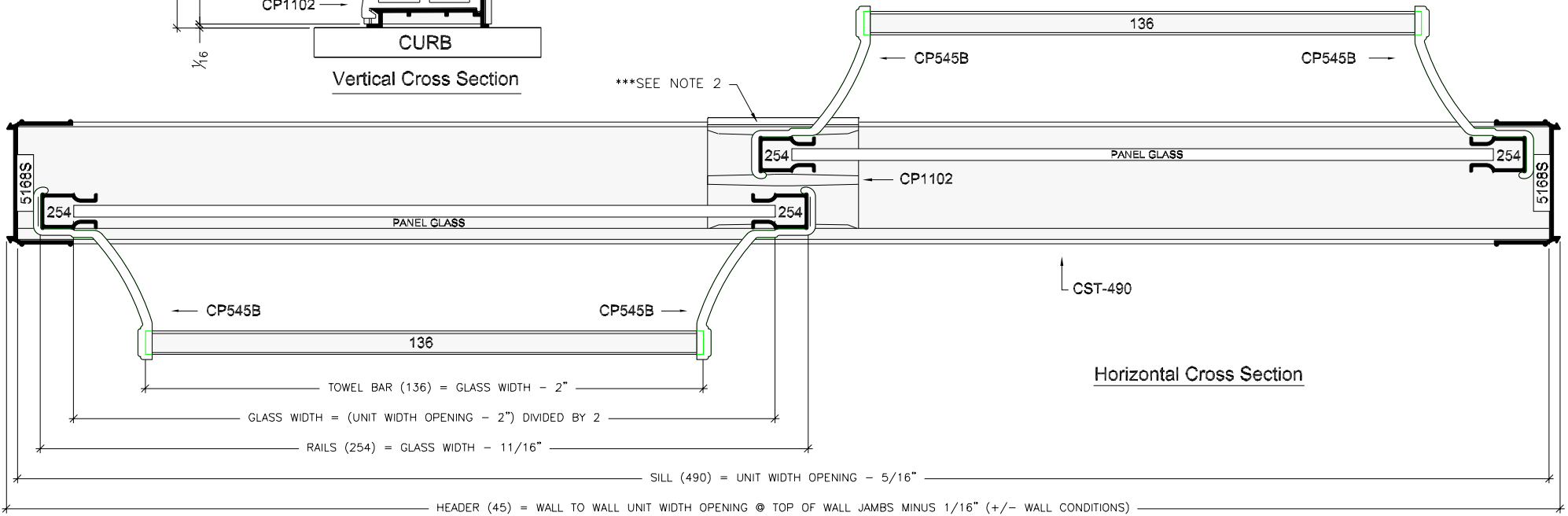


Vertical Cross Section

\*\*\*SEE NOTE 2



Horizontal Cross Section

**NOTES:**

1. FORMULAS ARE BASED ON A MINIMUM WIDTH OPENING. WHEN MEASURING OPENING WIDTHS, ALWAYS CHECK FOR OUT OF PLUMB WALL CONDITIONS.
- \*\*\* 2. FORMULAS FOR GLASS WIDTHS SHOWN WILL YIELD A "PERFECT OVERLAP". THE TERM DESCRIBES THE OVERLAPPING CONDITION OF THE TWO PANELS WHEN CLOSED (PANEL STILES ARE ALIGNED WHEN LOOKED AT STRAIGHT ON).

Series

Unit Configuration

Challenger

Framed Bypass Door



**Coastal Industries Inc.**